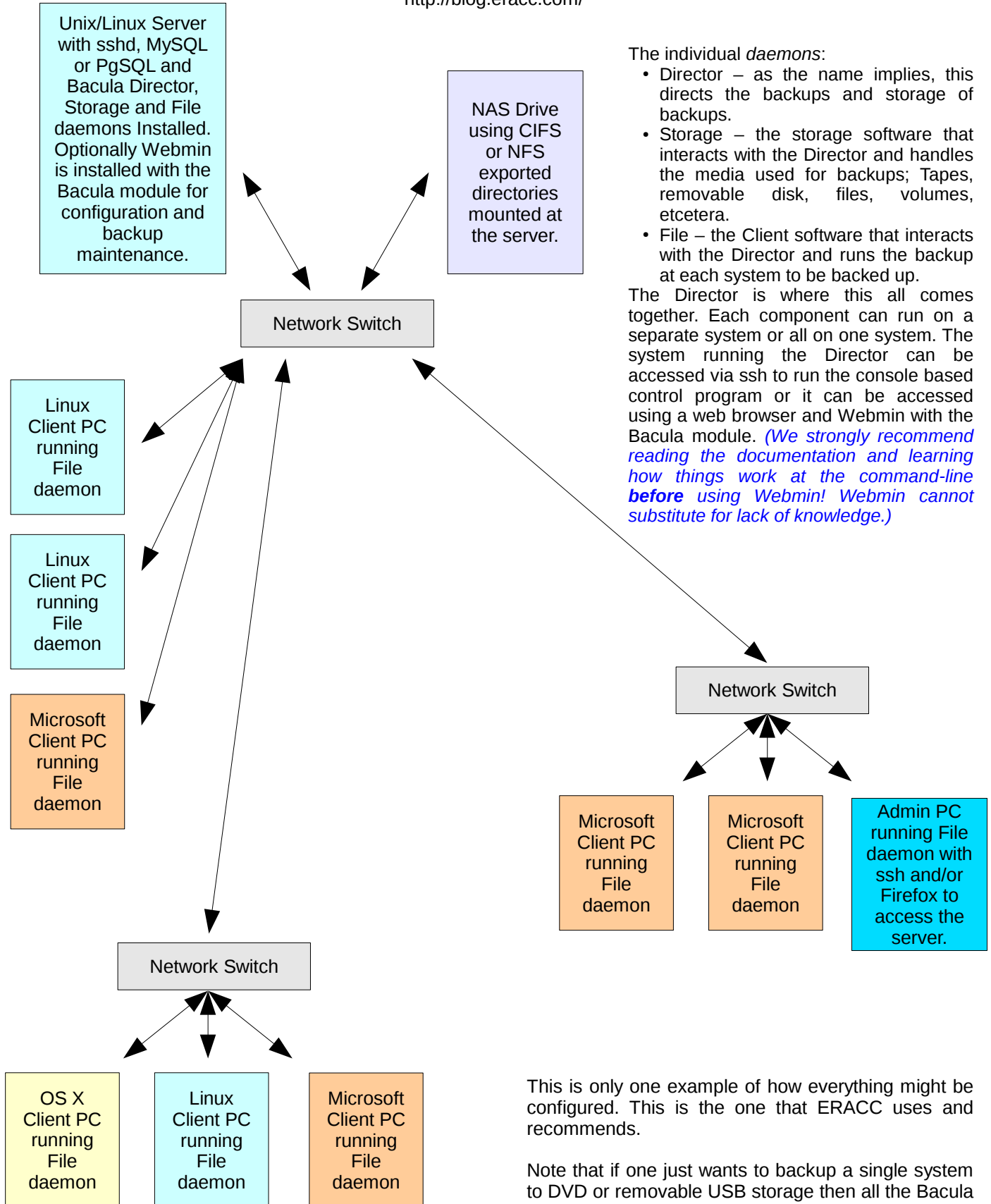


Bacula Components

How it all Fits Together
By ERA Computers & Consulting
<http://blog.eracc.com/>



The individual *daemons*:

- Director – as the name implies, this directs the backups and storage of backups.
- Storage – the storage software that interacts with the Director and handles the media used for backups; Tapes, removable disk, files, volumes, etcetera.
- File – the Client software that interacts with the Director and runs the backup at each system to be backed up.

The Director is where this all comes together. Each component can run on a separate system or all on one system. The system running the Director can be accessed via ssh to run the console based control program or it can be accessed using a web browser and Webmin with the Bacula module. *(We strongly recommend reading the documentation and learning how things work at the command-line before using Webmin! Webmin cannot substitute for lack of knowledge.)*

This is only one example of how everything might be configured. This is the one that ERACC uses and recommends.

Note that if one just wants to backup a single system to DVD or removable USB storage then all the Bacula components get installed on that one system.